



Omega Building, Wandsworth, SW18 1AZ £1,650 Per Calendar Month

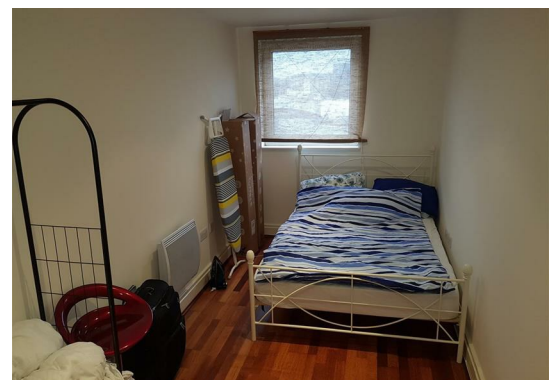




- 2 Bedrooms
- Fitted kitchen
- Washing machine
- Lift
- 2 Bathrooms
- Dishwasher
- Balcony with views
- Wandsworth Borough

Lovely 2 bedroom flat with open planned living and kitchen area and a balcony with views across the Thames. This development is just to the South of the river with shops and bars within walking distance. The kitchen is fully fitted with integrated appliances including dishwasher, washing machine and fridge freezer, good size lounge with balcony, master bedroom with en-suite shower room, second bedroom, family bathroom. Entryphone and lift. Parking is available at extra cost in the multi-story opposite.

One month's rent: £1650 | Month's Deposit: £1650 |



Energy Efficiency Rating			Environmental Impact (CO ₂) Rating		
	Current	Potential		Current	Potential
Very energy efficient - lower running costs			Very environmentally friendly - lower CO ₂ emissions		
(92 plus) A			(92 plus) A		
(81-91) B			(81-91) B		
(69-80) C			(69-80) C		
(55-68) D			(55-68) D		
(39-54) E			(39-54) E		
(21-38) F			(21-38) F		
(1-20) G			(1-20) G		
Not energy efficient - higher running costs			Not environmentally friendly - higher CO ₂ emissions		
England & Wales	EU Directive 2002/91/EC		England & Wales	EU Directive 2002/91/EC	

These particulars, whilst believed to be accurate are set out as a general outline only for guidance and do not constitute any part of an offer or contract. Intending purchasers should not rely on them as statements of representation of fact, but must satisfy themselves by inspection or otherwise as to their accuracy. No person in this firm's employment has the authority to make or give any representation or warranty in respect of the property.